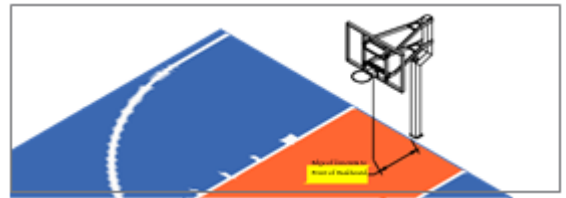


## INSTRUCTION

### Let's get started. Help us learn a little more about the court of your dreams.

- 1 Is the court for indoor or outdoor use?
- 2 What is the size (width and length dimensions) of the existing concrete pad or desired court?
- 3 What game lines would you like painted on the court?
- 4 What colors have you selected for your tiles and game lines?
- 5 Do you want a personalized logo? If so, we need a PDF or .JPG image of the logo and we need to know where it will be located on the court.
- 6 If you do not have an existing basketball goal in the ground, what is the measurement from the front of the pole to the front of the backboard? This is called the overhang. If your basketball goal is already in place, what is the measurement from the edge of the concrete under the goal to the front of the backboard?
- 7 Will any court accessories such as LED lights or adjustable net systems be needed? Will any game accessories such as Shuffleboard Sets or Pickleball Sets be needed?



### What happens next? Below are the steps we take to get your court delivered to you.

- 1 Once all of the above questions are answered, an estimate and a rendering of your court will be created to give you an idea of how your court will look.
- 2 Upon approval of the rendering and estimate, we will send you a secure Payment Authorization Form for you to make payment arrangements. When payment has been made, we will send you the receipt and Sales Order.
- 3 Our in-house designer will then create a final Customer Approval Drawing with the exact dimensions of the court listed.
- 4 Once approved, your order gets put on the production schedule.
- 5 When your court is completed, we will notify you of shipping and attach a photo of your assembled court.
- 6 Payment balances are collected and your court is shipped.
- 7 When the court has shipped, a picture of your shipment and the tracking information will be emailed to you.
- 8 The freight carrier will contact you to schedule delivery. Lift gate service is provided unless declined at the time of placing the order.

*Note: This will be a curb side delivery as freight carriers cannot access driveways. Additionally, items such as basketball goals, lighting systems, and containment fencing will arrive on larger/longer pallets that must be broken down inside the delivery truck. While some drivers will assist, there is never a guarantee, therefore you should be prepared to unload these items by yourself without the driver assisting.*



## HOW IT WORKS

Building your dream court is as easy as 1...2...3...



1

### MEASURE YOUR SPACE

Measure the length and width of the surface where you want to place your court.

- No existing surface? Simply measure the area where you want to install your court
- Looking for a start-to-finish installation? [Contact us](#) for details.

## DESIGN YOUR COURT

- Size
- Game Lines
- Colors
- Logos





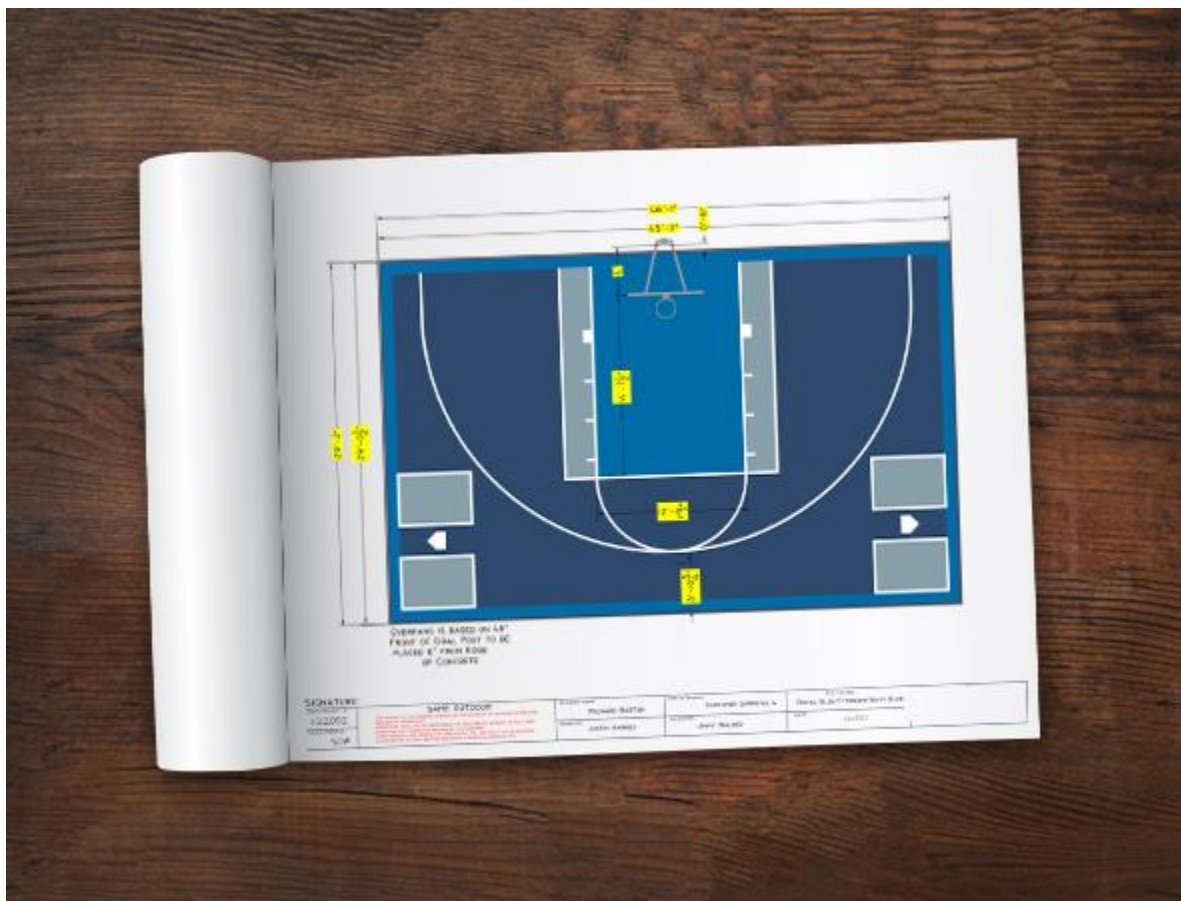
3

## REQUEST A QUOTE

You will be contacted within 48 hours by a team member. They will provide you with a custom quote that includes curbside delivery.

## PAYMENT, FINAL DESIGN APPROVAL & PRODUCTION

- Submit payment
- Receive final drawing for approval
- Once approved, court goes into production
- Receive a picture of the finished court before shipment





5

## SHIPPING & INSTALLATION

Your approved court is disassembled into sections for shipping and numerically packaged for ease of installation